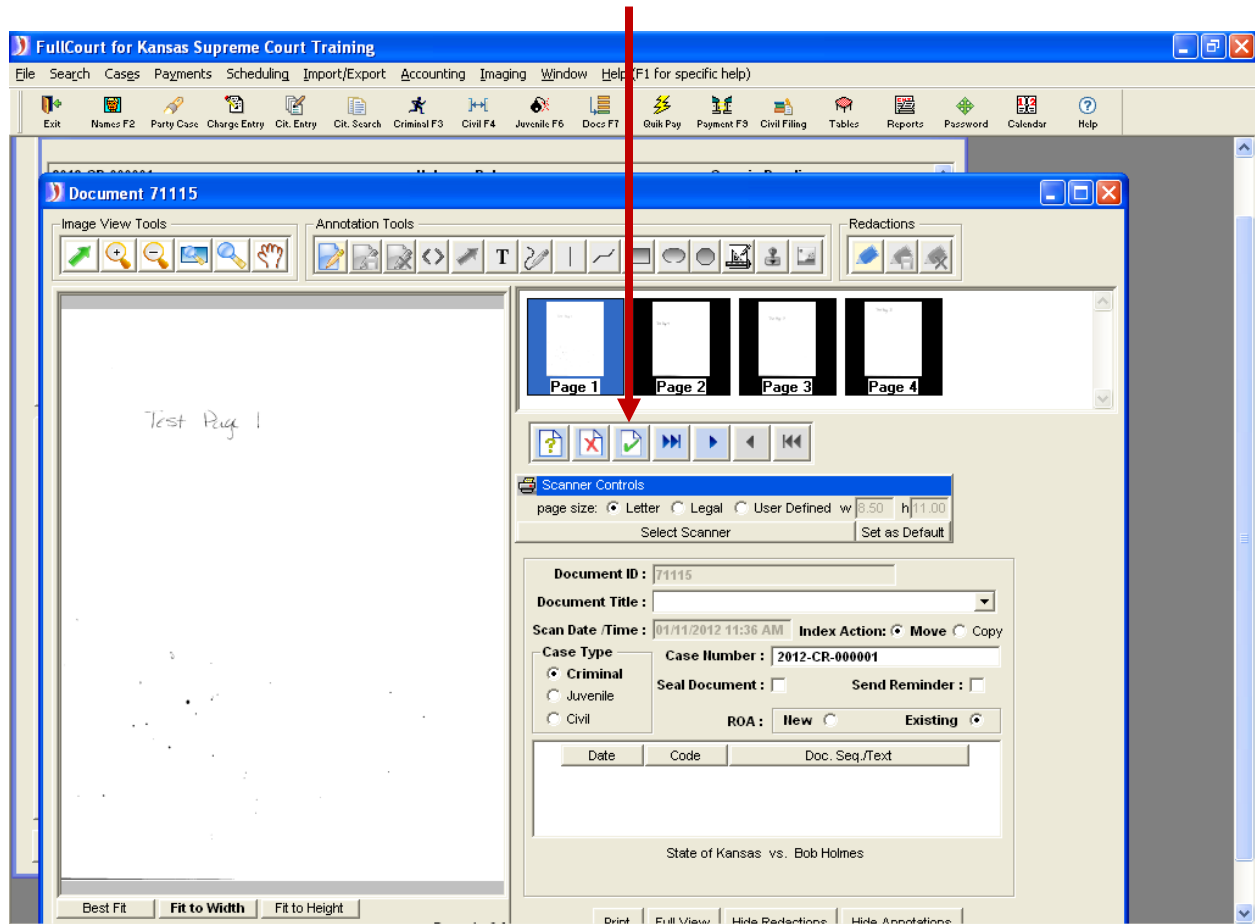
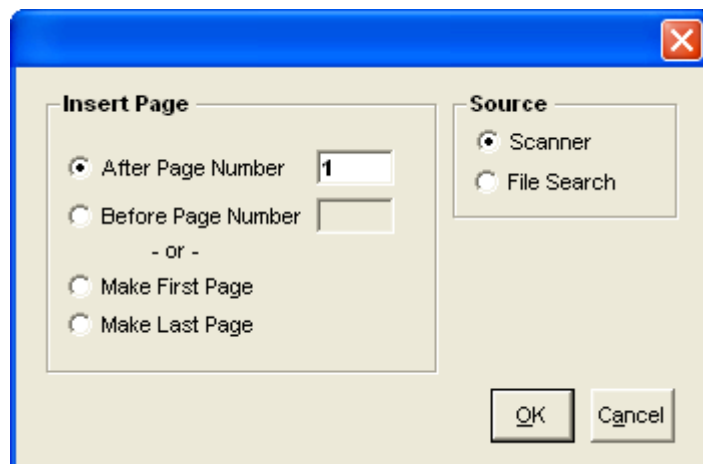


Selecting Scanner when Inserting a Page into an Existing Image

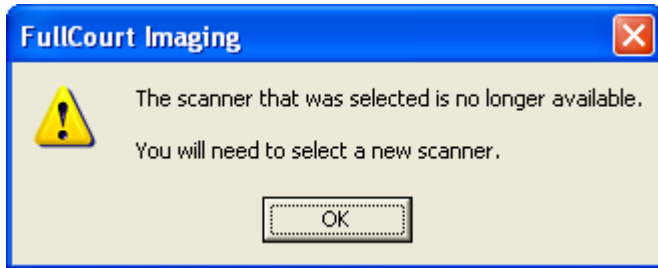
User selects to insert a page into an existing image.



User enters the placement of the page.



User receives this error.



The user must select which scanner they are using. Then the user needs to select the Set as Default button. If the user does not select the Set as Default button, then this error will appear every time a user tries to insert a page. If the user selects the Set as Default button, the first time they see this error, they should not have to select the scanner again when trying to insert a page.

